



# **ALPINA**

**Sales Manual  
Forest and Farm Equipment**

# BATTERIES AND CHARGER

**48v Power Units Battery**



**48v Fast Charger EU plug**

# Battery and Charger

## 48v Power Units



	<b>BT 2048 Li</b>	<b>BT 4048 Li</b>
Item number	270482010/A15	270484010/A15
EAN Code	8008984633551	8008984633568
Voltage	48 V	48 V
Capacity	2.0 Ah	4.0 Ah
Recharge Time (STD)	90 min	180 min
Recharge Time (FAST)	35 min	75 min
Net Weight	0,95 kg	1,45 kg

## 48v Fast Charger



### FAST CHARGER EU PLUG

Item number	270480120/16
EAN Code	8008984640276
Voltage	48 V
Charging Speed	Fast
Output Current	3,0 A
Net Weight	1,0 kg

# Battery machines

H 5648 Li Hedge Trimmer



BL 548 Air Blower



B 3548 Li Brushcutter



MT 2148 Li Multi-tool



# Battery Hedge Trimmer

H 5648 Li

<b>Article nbr.</b>	<b>273560000/A15</b>
<b>EAN Code</b>	8008984632806
<b>Battery</b>	Not Included
<b>Battery Capacity</b>	2,0 Ah
<b>Working Time</b>	20 min
<b>Power</b>	120 W
<b>Motor Type</b>	With Brushes
<b>Blade Length</b>	61 cm
<b>Cutting Length</b>	56 cm
<b>Blade Type</b>	Dual action laser cut
<b>Blade speed</b>	3000 spm
<b>Teeth Distance</b>	27 mm
<b>Handle</b>	Turnable 180°-3 pos.
<b>Net Weight</b>	2,7 kg
<b>Vibration Level</b>	3,6 m/s <sup>2</sup>
<b>Noise Power Level</b>	99 dB



# Battery Brushcutter

**B 3548 Li**

<b>Article nbr.</b>	<b>272361000/A17</b>
EAN Code	8008984791275
Battery	<b>Not included</b>
Battery Capacity	4,0 Ah
Working time	24 min
Power	235 W
Motor Type	Brushless
Handle	Loop
Cutting System	Nylon head + 4T blade (255mm)
Cutting Width	36 cm
Line Diameter	2,0 mm
Adjustable Handle	Yes
Shaft	Straight Split
Harness	Single
Weight with Nylon Head	4,7 kg
Vibration Level(left/right handle)	3,0 / 3,11 m/s <sup>2</sup>
Noise Power Level	100 dB



# Battery Air Blower

## BL 548 Li

<b>Article nbr.</b>	<b>275000100/A15</b>
<b>EAN code</b>	8008984632820
<b>Battery</b>	<b>Included</b>
<b>Battery Capacity</b>	2,0 Ah
<b>Working Time</b>	23 min
<b>Power</b>	300 W
<b>Motor Type</b>	With brushes
<b>Max Air Speed</b>	76 m/s
<b>Max Air Volume</b>	5,7 m <sup>3</sup> /min
<b>Air speed regulation</b>	Yes
<b>Net weight</b>	1,4 kg
<b>Vibration Level</b>	2,6 m/s <sup>2</sup>
<b>Noise Power Level</b>	100 dB

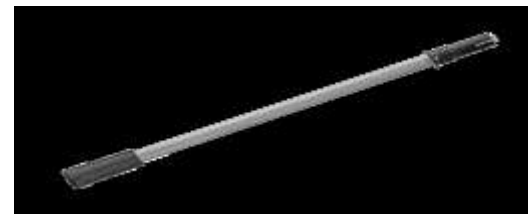




# Battery multi-tool

## MT 2148 Li

<b>Article nbr.</b>	<b>277340000/A15</b>
EAN code	8008984632837
Battery	<b>Notincluded</b>
Battery Capacity	2,0 Ah
<b>POLE HEDGER</b>	
Working Time	20 min
Blade Length	51 cm
Cutting Length	46 cm
Spacing teeth	18 mm
Turnable Cutting Head	105°-7 pos.
Blade speed	3000 spm
Vibration Level	1,5 m/s <sup>2</sup>
Noise Power Level	99 dB
Net weight (Body + tool)	3,6 kg
Total length (Body + tool)	226 cm (296 cm with ext. pole)
<b>POLE PRUNER</b>	
Working Time	15 min
Bar Length	20 cm –8"
Chain type	3/8" .050" (91PJ-33X)
Chain Lubrication	Automatic
Chains Speed	9,9 m/s
Tensioner	With tool
Max rpm with chain & bar	4500 rpm
Vibration Level	1,9 m/s <sup>2</sup>
Noise power Level	101 dB
Net Weight (Body + tool)	3,4 kg



# PETROL MACHINES

## Petrol Chainsaws

C 50-20"



AC 52-20"

## Brushcutters

B 32



B 32D



# PETROL MACHINES



ABL 27 Air Blower



MT 26 5in1



H 60 Hedge Trimmer



# Petrol chainsaw

C 50-20''



<b>Displacement</b>	<b>49.3 cc</b>
Power (KW)	2.20
Power (HP)	3.00
Bar Inches	20
Bar cm	50
Chain	.325" .058" (21BPX0-78X)
Oil pump	AUTOMATIC -ADJ.
Oil Tank Volume	0.26 L
Tensioner	SIDE SCREW
Fuel Tank Volume	0.55 L
Weight (w/o bar and chain)	5.50 Kg
Vibration Level (m/s <sup>2</sup> )	8,68 (front) / 10,23 (rear)
Noise Power Level	114 dB
Article nbr.	205020000/11
EAN Code	8008984506879

# Petrol chainsaw

## AC 52-20"



ITEM NUMBER	240522000/A17
DISPLACEMENT	52,0 cc
POWER	Kw2,3 –Hp3,1
RPM IDLE (Bar-chainassembled)	2.900 -3.300
RPM MAXIMUM (Bar chain assemble)	12.000
AIR FILTER TYPE	NYLON NET
BAR	20" - 50 cm (208PXBK095) PRO AM
CHAIN	.325" .058" (21BPX078X)
CHAIN SPEED m/s	23,11
DECOMPRESSION VALVE	YES
OIL PUMP	AUTOMATIC ADJUSTABLE
OIL TANK CAPACITY	0.26 L
FUEL TANK CAPACITY	0.47 L
Vibration Level (m/s <sup>2</sup> )	6.04 rear / 6.49 front
Noise Power Level	114 dB
WEIGHT W/O BAR AND CHAIN	5.3 Kg

# Petrol Brushcutter

## B 32

<b>Displacement</b>	<b>32.6 cc</b>
Power(KW)	0.90
Power (HP)	1.2
Transmission $\varnothing$ mm	26mm x 1,5mm
Handle	Loop
Nylon Head	Tap & Go –2 strings
Cutting Width	430 mm
Line Diameter	2.4 mm
Blade	3 Teeth(1,4mm)
Blade Diameter	255 mm
Fuel Tank Volume	0.80 L
Harness	Single Improved
Weight(excl. cutting equip.)	7,40 Kg
Vibration level (m/s <sup>2</sup> )	6.60 (rear) / 5.26 (front)
Noise Power Level	114 dB
Article nbr.	287220000/16
EAN Code	8008984639638



# Petrol Brushcutter

## B 32D

<b>Displacement</b>	<b>32.6 cc</b>
<b>Power(KW)</b>	0.90
<b>Power (HP)</b>	1.2
<b>Transmission <math>\varnothing</math> mm</b>	26mm x 1,5mm
<b>Handle</b>	Bike
<b>Nylon Head</b>	Tap & Go –2 strings
<b>Cutting Width</b>	430 mm
<b>Line Diameter</b>	2.4 mm
<b>Blade</b>	3 Teeth(1,4mm)
<b>Blade Diameter</b>	255 mm
<b>Fuel Tank Volume</b>	0.80 L
<b>Harness</b>	Double luxury
<b>Weight(excl. cutting equip.)</b>	7,80 Kg
<b>Vibration Level (m/s<sup>2</sup>)</b>	6.58 (left) / 5.28 (right)
<b>Noise Power Level</b>	114 dB
<b>Article nbr.</b>	287221000/16
<b>EAN code</b>	8008984639645



# Petrol Hedge Trimmer

H 60



<b>Displacement</b>	<b>24.5 cc</b>
<b>Power (KW)</b>	0.85
<b>Power (HP)</b>	1.16
<b>Cutting Length</b>	55 cm
<b>Blade Type</b>	Laser cut
<b>Teeth Distance</b>	27 mm
<b>Handle</b>	180°Adjustable-3 steps
<b>Net weight</b>	5.5 Kg
<b>Vibration Level (m/s<sup>2</sup>)</b>	2.03 (rear) / 2.18 (front)
<b>Noise Power Level</b>	109 dB
<b>Article nbr.</b>	252961000/14
<b>EAN Code:</b>	8008984627024



# Petrol Air Blower

**ABL 27**

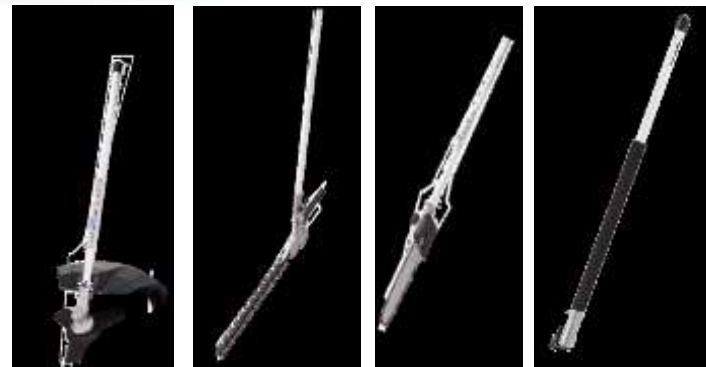


<b>ITEM NUMBER</b>	<b>255127090/A17</b>
<b>EAN CODE</b>	<b>8008984800083</b>
<b>DISPLACEMENT</b>	<b>27,6 cm<sup>3</sup></b>
<b>POWER</b>	<b>0,8 Kw-1,07 (HP)</b>
<b>AIR VOLUME</b>	<b>10,2 m<sup>3</sup>/min</b>
<b>MAX AIR SPEED</b>	<b>72 m/sec</b>
<b>VACUUM KIT</b>	<b>NO</b>
<b>VIBRATION LEVEL (m/s<sup>2</sup>)</b>	<b>2,06 (upperhandle) -1,33 (lower handle)</b>
<b>NOISE POWER LEVEL</b>	<b>109 dB</b>
<b>WEIGHT</b>	<b>4,8 kg</b>

# Petrol multi-tool

## MT 26 -5 in 1

<b>ITEM NUMBER</b>	<b>287130150/17</b>
<b>EAN CODE</b>	<b>8008984799974</b>
<b>POWER UNIT</b>	
<b>DISPLACEMENT</b>	25.4 cc
<b>POWER</b>	0,7 Kw
<b>FUEL TANK CAPACITY</b>	0,65L
<b>SHAFT</b>	Ø26x1,5 mm (Joint)
<b>HANDLE</b>	Loop
<b>HARNESS</b>	Single Improved
<b>TOTAL LENGTH</b>	102 cm
<b>BRUSHCUTTER</b>	
<b>CUTTING HEAD</b>	T&G (2 string-Ø2,4 mm)
<b>CUTTING WIDTH</b>	430 mm
<b>BLADE</b>	3T blade(255 mm)
<b>POLE HEDGER</b>	
<b>CUTTING LENGHT</b>	400 mm
<b>SPACING TEETH</b>	25 mm
<b>TURNABLE CUTTING HEAD</b>	180°
<b>WEIGHT</b>	2,3 kg
<b>TOTAL LENGTH</b>	124 cm
<b>POLE PRUNER</b>	
<b>BAR LENGHT</b>	10" -25 cm
<b>CHAIN TYPE</b>	3/8" .050" (91PJ-40X)
<b>OIL TANK CAPACITY</b>	125 ml
<b>WEIGHT</b>	1,7 kg (1,2 w/o bar and chain)
<b>TOTAL LENGTH</b>	105 cm
<b>EXTENSION POLE</b>	
<b>LENGHT</b>	70 cm
<b>WEIGHT</b>	0,8 kg



**THANK YOU**

AL KHAREEF AL AKHDAR AGRICULTURAL

